

## LED BIKE LIGHT SET

GB CY  
**LED BIKE LIGHT SET**  
 Operation and Safety Notes

GR CY  
**ΣΕΤ ΛΑΜΠΕΣ ΠΟΔΗΛΑΤΟΥ-LED**  
 Υποδείξεις χειρισμού και ασφαλείας

## LED FAHRRADLEUCHTEN-SET

BE AT CH  
**LED-FAHRRADLEUCHTEN-SET**  
 Bedienungs- und Sicherheitshinweise

## IAN 270387

Model No. 14119

GB GR CY

- Tighten and hook in the rubber tab **11**.
- Loosen the retaining screw **15** on the bracket **2** and adjust to the desired angle.
- Then tighten the screw. Tighten the screw hand tight. To prevent damage, do not use tools for this step.
- Slide the tail light **14** into the bracket **2** until you hear it lock into place.
- To release the tail light **14**, pull down on the tail light lock **10** and slide off the tail light **14**.

#### ● Inserting batteries into the tail light (see Fig. D)

- Slide the battery cover **16** off to the back.
- Insert the batteries into the tail light (2 x AAA 1.5V). Ensure the correct polarity.
- Then reassemble the light.

On/Off switch	
press once	Power mode (40 Lux) for riding in unlit areas
press twice	Standard mode (20 Lux) for riding in lit areas
press three times	Eco mode (10 Lux) for riding in well lit areas
press four times	off

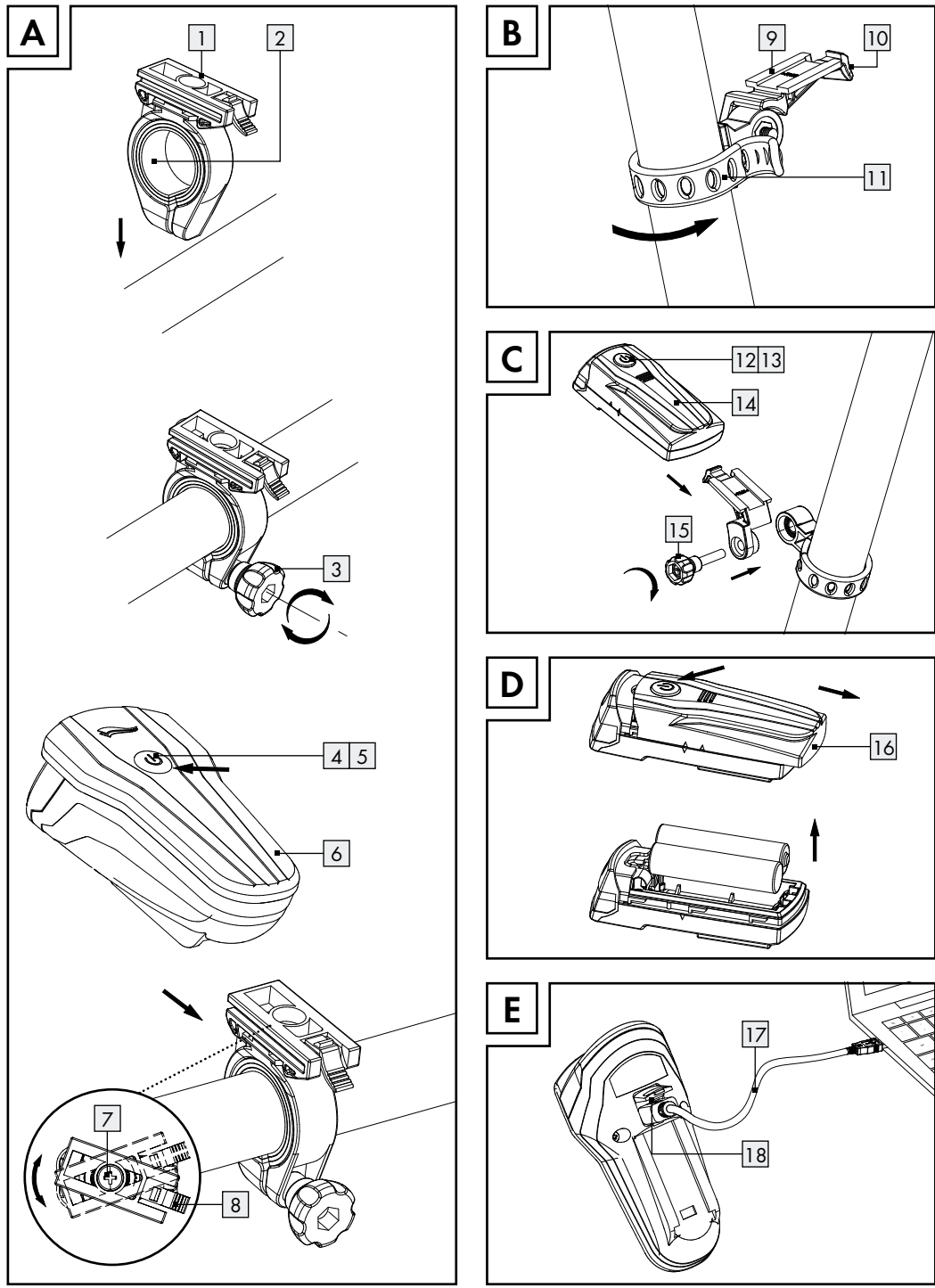
BE GR CY

- Remove the rubber cover from the battery charging socket **18** and connect the USB cable **17** to the battery charging socket **18**.
- Then connect the USB plug of the USB cable **17** to a computer/laptop/standard USB charger with 5V DC and 500 - 1000mA. Using chargers with different specifications can damage the

GR CY

- Указания за безопасност**
  - ⚠️ ПРΕΔУΠΡΕЖΔΕΝΙΕ! ΟΠΛΑΝΟΣΤ ΖΑ ΖΗΩΤΑ ΚΑΙ ΟΠΛΑΝΟΣ Τ ΖΠΟΠΛΥΚΑ ΖΑ ΒΕΒΕΤΑ Ι ΜΑΚΚΙ ΔΕΨΑ!**
Никога не оставяйте децата без наблюдение с опасновъзник материал, тъй като съществува опасност от задущаване вследствие потгочене на части от опакването. Децата често подценяват опасността.
  - Дръжте продукта далече от деца. Продуктът не е играчка!
  - Този уред не е предназначен за употреба от лица (включително деца) с ограничени физичеки, сензорни или умствени способности, или които не притежават достатъчно опит или знание, освен ако те не са под наблюдение на лице, отговарящо за тяхната безопасност. Имайте предвид, че повредите поради неправилна употреба, неспазване на утвърденото за безопасност или намеса от неоторизирани лица се изключват от гаранцията.
  - В никакъв случай не разглобявайте продукта. Некомпетентно извършените ремонти могат да създадат значителни опасности за потребителя. За ремонти се обръщайте само към специализирани. Светодиодите не се подменят.
- ⚠️ ΠΡΕΔΥΠΡΕЖΔΕΝΙΕ! ΟΠΛΑΝΟΣ Τ ΖΗΩΤΑ Ι ΟΠΛΑΝΟΣ Τ ΖΠΟΠΛΥΚΑ ΖΑ ΖΗΩΤΑ ΚΑΙ ΟΠΛΑΝΟΣ Τ ΖΠΟΠΛΥΚΑ ΖΑ ΒΕΒΕΤΑ Ι ΜΑΚΚΙ ΔΕΨΑ!**
Никога не оставяйте децата без наблюдение с опасновъзник материал, тъй като съществува опасност от задущаване вследствие потгочене на части от опакването. Децата често подценяват опасността.
- Дръжте продукта далече от деца. Продуктът не е играчка!
- Този уред не е предназначен за употреба от лица (включително деца) с ограничени физичеки, сензорни или умствени способности, или които не притежават достатъчно опит или знание, освен ако те не са под наблюдение на лице, отговарящо за тяхната безопасност. Имайте предвид, че повредите поради неправилна употреба, неспазване на утвърденото за безопасност или намеса от неоторизирани лица се изключват от гаранцията.
- В никакъв случай не разглобявайте продукта. Некомпетентно извършените ремонти могат да създадат значителни опасности за потребителя. За ремонти се обръщайте само към специализирани. Светодиодите не се подменят.

- ⚠️ ВНИΜΑΝΙΕ! ΟΠΛΑΝΟΣ Τ ΖΗΩΤΑ Ι ΟΠΛΑΝΟΣ Τ ΖΠΟΠΛΥΚΑ ΖΑ ΖΗΩΤΑ ΚΑΙ ΟΠΛΑΝΟΣ Τ ΖΠΟΠΛΥΚΑ ΖΑ ΒΕΒΕΤΑ Ι ΜΑΚΚΙ ΔΕΨΑ!**
Никога не пререждайте батериите!
- Изваждайте батериите от продукта, когато няма да го използвате подълго време.
- При поставяне съблюдавайте правилната полярност! Те а е възникнала в отделенито за батериията.



BE GR CY

GB GR CY

GR CY  
**ΕΠΙΧΕΙΡΗΣΙΑΚΟ ΜΑΝΔΥΛΙΟ**  
 Οδηγίες χειρισμού και ασφαλείας

GR CY  
**ΣΕΤ ΛΑΜΠΕΣ ΠΟΔΗΛΑΤΟΥ-LED**  
 Υποδείξεις χειρισμού και ασφαλείας

BE AT CH  
**LED-FAHRRADLEUCHTEN-SET**  
 Bedienungs- und Sicherheitshinweise

GB GR CY

GR CY

BE GR CY

GB GR CY

GR CY  
**ΕΠΙΧΕΙΡΗΣΙΑΚΟ ΜΑΝΔΥΛΙΟ**  
 Οδηγίες χειρισμού και ασφαλείας

GR CY  
**ΣΕΤ ΛΑΜΠΕΣ ΠΟΔΗΛΑΤΟΥ-LED**  
 Υποδείξεις χειρισμού και ασφαλείας

BE AT CH  
**LED-FAHRRADLEUCHTEN-SET**  
 Bedienungs- und Sicherheitshinweise

GB GR CY

GR CY

BE GR CY

GB GR CY

GR CY  
**ΕΠΙΧΕΙΡΗΣΙΑΚΟ ΜΑΝΔΥΛΙΟ**  
 Οδηγίες χειρισμού και ασφαλείας

GB GR CY

GR CY  
**ΕΠΙΧΕΙΡΗΣΙΑΚΟ ΜΑΝΔΥΛΙΟ**  
 Οδηγίες χειρισμού και ασφαλείας

GR CY  
**ΣΕΤ ΛΑΜΠΕΣ ΠΟΔΗΛΑΤΟΥ-LED**  
 Υποδείξεις χειρισμού και ασφαλείας

BE AT CH  
**LED-FAHRRADLEUCHTEN-SET**  
 Bedienungs- und Sicherheitshinweise

GB GR CY

GR CY

BE AT CH  
**LED-FAHRRADLEUCHTEN-SET**  
 Bedienungs- und Sicherheitshinweise

GB GR CY

GR CY

GR CY  
**ΕΠΙΧΕΙΡΗΣΙΑΚΟ ΜΑΝΔΥΛΙΟ**  
 Οδηγίες χειρισμού και ασφαλείας

GR CY  
**ΣΕΤ ΛΑΜΠΕΣ ΠΟΔΗΛΑΤΟΥ-LED**  
 Υποδείξεις χειρισμού και ασφαλείας

BE AT CH  
**LED-FAHRRADLEUCHTEN-SET**  
 Bedienungs- und Sicherheitshinweise

GB GR CY

GR CY

BE AT CH  
**LED-FAHRRADLEUCHTEN-SET**  
 Bedienungs- und Sicherheitshinweise

GB GR CY

GR CY  
**ΕΠΙΧΕΙΡΗΣΙΑΚΟ ΜΑΝΔΥΛΙΟ**  
 Οδηγίες χειρισμού και ασφαλείας

GR CY  
**ΣΕΤ ΛΑΜΠΕΣ ΠΟΔΗΛΑΤΟΥ-LED**  
 Υποδείξεις χειρισμού και ασφαλείας

BE AT CH  
**LED-FAHRRADLEUCHTEN-SET**  
 Bedienungs- und Sicherheitshinweise

GB GR CY

GR CY

BE AT CH  
**LED-FAHRRADLEUCHTEN-SET**  
 Bedienungs- und Sicherheitshinweise

GB GR CY

GR CY

BE AT CH  
**LED-FAHRRADLEUCHTEN-SET**  
 Bedienungs- und Sicherheitshinweise

GB GR CY

GR CY

- Always keep the product away from children. This product is not a toy!
- This product is not intended to be used by persons (including children) with impaired physical, sensory or mental capacity, or lacking experience or knowledge unless supervised by a person responsible for their safety. Please note, damages caused by incorrect handling, non-compliance with the operating instructions or interference with the device by unauthorised individuals are excluded.
- Never take the product apart. Improper repairs may result in considerable danger to the user. Repairs should only be carried out by specialist personnel. The LED lights are not replaceable.
- ⚠️ ΠΡΕΔΥΠΡΕЖΔΕΝΙΕ! ΟΠΛΑΝΟΣ Τ ΖΗΩΤΑ ΚΑΙ ΟΠΛΑΝΟΣ Τ ΖΠΟΠΛΥΚΑ ΖΑ ΒΕΒΕΤΑ Ι ΜΑΚΚΙ ΔΕΨΑ!**
Using the incorrect charger may cause the headlight **6** to be damaged, overheat or even explode. Doing so will void the warranty.

BE AT CH  
**LED-FAHRRADLEUCHTEN-SET**  
 Bedienungs- und Sicherheitshinweise

GB GR CY

GR CY

- ⚠️ ВНИМАНИЕ! ОПЛАНОС Τ ΖΗΩΤΑ ΚΑΙ ΟΠЛΑΝОС Τ ΖΠОΠΛΥΚΑ ΖΑ ΒΕΒΕΤΑ Ι ΜΑΚΚΙ ΔΕΨΑ!**
**⚠️ ВНИМАНИЕ! ОПЛАНОС Τ ΖΗΩΤΑ ΚΑΙ ΟΠЛΑΝΟС Τ ΖΠΟΠΛΥΚΑ ΖΑ ΒΕΒΕΤΑ Ι ΜΑΚΚΙ ΔΕΨΑ!**
Никога не пререждайте батериите!
- ⚠️ CAUTION! EXPLOSION HAZARD!**
Never recharge the batteries!
- Remove batteries during extended periods of non-use.
- When inserting the battery ensure the polarity is correct! This is shown in the battery compartment.
- If necessary, clean the battery and device contacts before inserting the battery.
- Remove spent batteries immediately from the device. There is an increased risk of leaks!
- Always replace all the batteries at the same time.
- Do not mix alkaline batteries and rechargeable batteries.
- Never mix old and new batteries.
- Do not dispose of battery/rechargeable batteries in household waste!
- Every consumer is legally obliged to dispose of batteries/rechargeable batteries in the proper manner!
- ⚠️ CAUTION! EXPLOSION HAZARD!**
Keep battery/rechargeable batteries away from children, do not throw batteries/rechargeable batteries into fire, do not short-circuit and do not take apart.

BE AT CH  
**LED-FAHRRADLEUCHTEN-SET**  
 Bedienungs- und Sicherheitshinweise

GB GR CY

GR CY

BE AT CH  
**LED-FAHRRADLEUCHTEN-SET**  
 Bedienungs- und Sicherheitshinweise

GB GR CY

GR CY

BE AT CH  
**LED-FAHRRADLEUCHTEN-SET**  
 Bedienungs- und Sicherheitshinweise

GB GR CY

GR CY

BE AT CH  
**LED-FAHRRADLEUCHTEN-SET**  
 Bedienungs- und Sicherheitshinweise

GB GR CY

GR CY

BE AT CH  
**LED-FAHRRADLEUCHTEN-SET**  
 Bedienungs- und Sicherheitshinweise

GB GR CY

GR CY

BE AT CH  
**LED-FAHRRADLEUCHTEN-SET**  
 Bedienungs- und Sicherheitshinweise

GB GR CY

GR CY

BE AT CH  
**LED-FAHRRADLEUCHTEN-SET**  
 Bedienungs- und Sicherheitshinweise

GB GR CY

<b>10</b>	Φικςатор на задната светлина
<b>11</b>	Гумена пластина за държача на задната светлина
<b>12</b>	Превключвател Вкл./Изкл. задна светлина
<b>13</b>	Светлинна индикация за батерия задна светлина
<b>14</b>	Задна светлина
<b>15</b>	Осигурителен винт на държача за задната светлина
<b>16</b>	Капак на отделенито за батериите за задната светлина
<b>17</b>	USB кабел
<b>18</b>	Букса за зареждане на акумулаторната батерия

GR CY  
**ΕΠΙΧΕΙΡΗΣΙΑΚΟ ΜΑΝΔΥΛΙΟ**  
 Οδηγίες χειρισμού και ασφαλείας

GR CY  
**ΣΕΤ ΛΑΜΠΕΣ ΠΟΔΗΛΑΤΟΥ-LED**  
 Υποδείξεις χειρισμού και ασφαλείας

BE AT CH  
**LED-FAHRRADLEUCHTEN-SET**  
 Bedienungs- und Sicherheitshinweise

GB GR CY

GR CY

BE AT CH  
**LED-FAHRRADLEUCHTEN-SET**  
 Bedienungs- und Sicherheitshinweise

GB GR CY

GR CY

BE AT CH  
**LED-FAHRRADLEUCHTEN-SET**  
 Bedienungs- und Sicherheitshinweise

GB GR CY

GR CY

BE AT CH  
**LED-FAHRRADLEUCHTEN-SET**  
 Bedienungs- und Sicherheitshinweise

GB GR CY

GR CY

BE AT CH  
**LED-FAHRRADLEUCHTEN-SET**  
 Bedienungs- und Sicherheitshinweise

GB GR CY

GR CY

- 15** Tail light retaining screw
- 16** Tail light battery cover
- 17** USB cable
- 18** Charging socket

#### ● Scope of delivery

- 1 Headlight
- 1 Tail light
- 1 Headlight bracket
- 1 Tail light bracket
- 2 Batteries AAA
- Reducer rubbers
- 1 USB cable
- 1 Instructions for assembly and use

#### ● Technical Data

**Headlight**  
 Model designation: XC-195A/ LI-1  
 Rated output: 1W  
 Protection type: IP44 according to DIN EN 60529  
 Rechargeable Li-ion battery: 1300mAh, 3.7V

**Tail light**  
 Model designation: XC-117D/ D/LED 3  
 Rated output: 0.2W  
 Protection type: IP44 according to DIN EN 60529  
 Batteries: 2 x 1.5V AAA LR03

**Note:** Only use rechargeable 1.2V batteries or equivalent 1.5V alkaline batteries.

#### ⚠️ Safety instructions

- ⚠️ [WARNING] DANGER TO LIFE AND RISK OF ACCIDENT FOR INFANTS AND CHILDREN!**
Never leave children unsupervised with the packing material due to the suffocation hazard posed by swallowing parts thereof. Children frequently underestimate the dangers.

GB/CY

### Комплект светодиодни фарове за велосипед

GR CY  
**ΕΠΙΧΕΙΡΗΣΙΑΚΟ ΜΑΝΔΥΛΙΟ**  
 Οδηγίες χειρισμού και ασφαλείας

GR CY  
**ΣΕΤ ΛΑΜΠΕΣ ΠΟΔΗΛΑΤΟΥ-LED**  
 Υποδείξεις χειρισμού και ασφαλείας

BE AT CH  
**LED-FAHRRADLEUCHTEN-SET**  
 Bedienungs- und Sicherheitshinweise

GB GR CY

GR CY

BE AT CH  
**LED-FAHRRADLEUCHTEN-SET**  
 Bedienungs- und Sicherheitshinweise

GB GR CY

GR CY

BE AT CH  
**LED-FAHRRADLEUCHTEN-SET**  
 Bedienungs- und Sicherheitshinweise

GB GR CY

GR CY

BE AT CH  
**LED-FAHRRADLEUCHTEN-SET**  
 Bedienungs- und Sicherheitshinweise

GB GR CY

GR CY

BE AT CH  
**LED-FAHRRADLEUCHTEN-SET**  
 Bedienungs- und Sicherheitshinweise

GB GR CY

GR CY  
**ΕΠΙΧΕΙΡΗΣΙΑΚΟ ΜΑΝΔΥΛΙΟ**  
 Οδηγίες χειρισμού και ασφαλείας



